

NO WATER INLET TO THE MACHINE

- CHECK THE WATER SUPPLY
- CHECK THE WATER INLET HOSE (Twisted or not?)
- CHECK THE SIEVES ON THE WATER INLET VALVE AND THE WATER INLET HOSE

- START A PROGRAM
- CHECK THE DRAIN STOPS IN 30 SEC.

DRAIN CONTINUES AT FILLING STEP

Y

N

- AFTER DRAIN STEP WATER INLET VALVE IS ENERGIZED AND WATER INLET STARTS
INLET WATER IS ELECTRONICALLY MEASURED BY A MAGNETIC COUNTER SYSTEM

CHECK THE OVERFLOW SECURITY SWITCH & WIRING

CHECK THE RELATED CONTACTS OF THE ELECTRONICS AND THE WIRING TO THE WATER INLET VALVE

WATER INLET VALVE ENERGIZED

N

Y

-CHECK THE WATER COUNTER AND WIRING

PNEUMATIC SECURITY AVAILABLE WITH WATER INLET VALVE

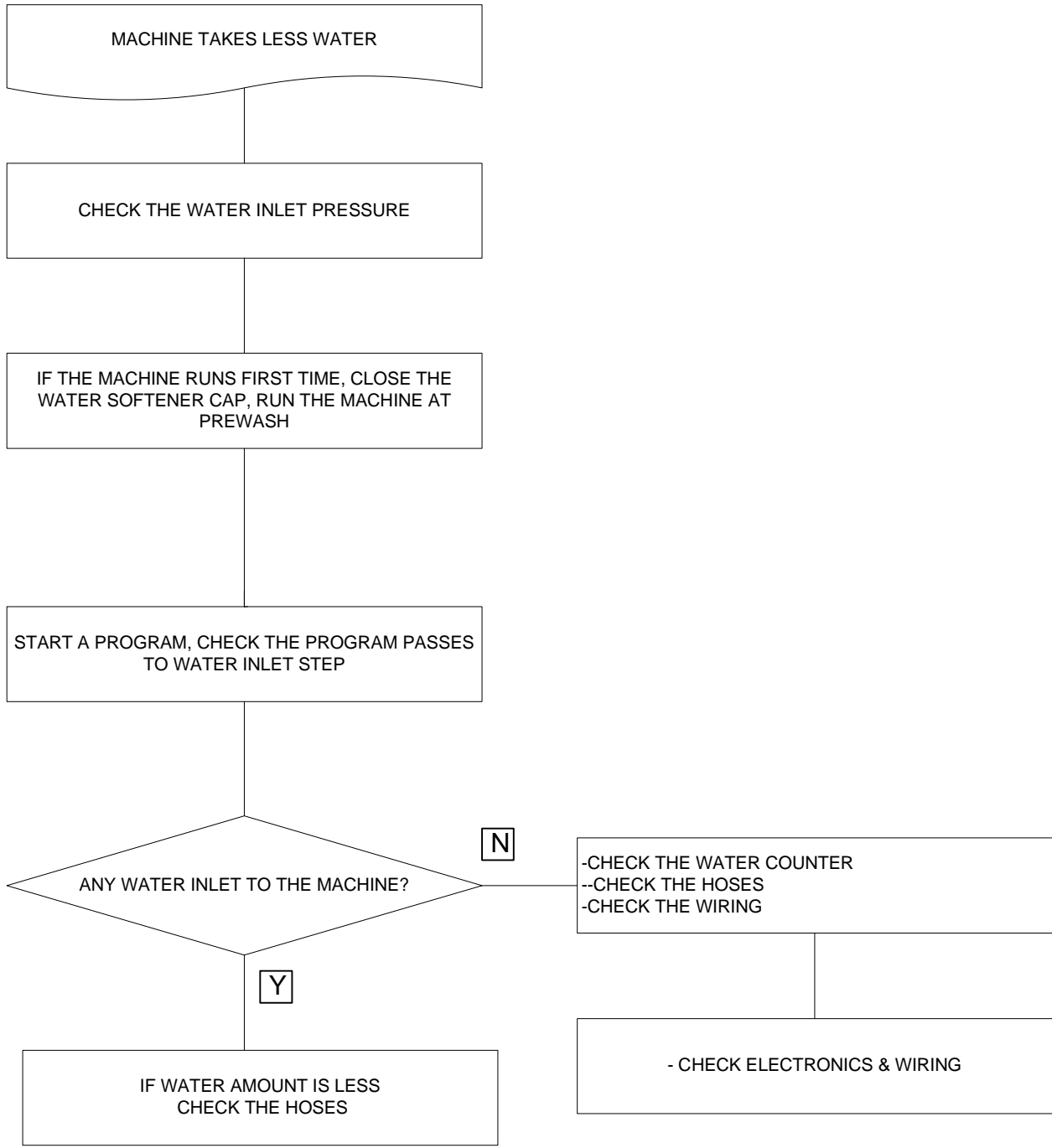
N

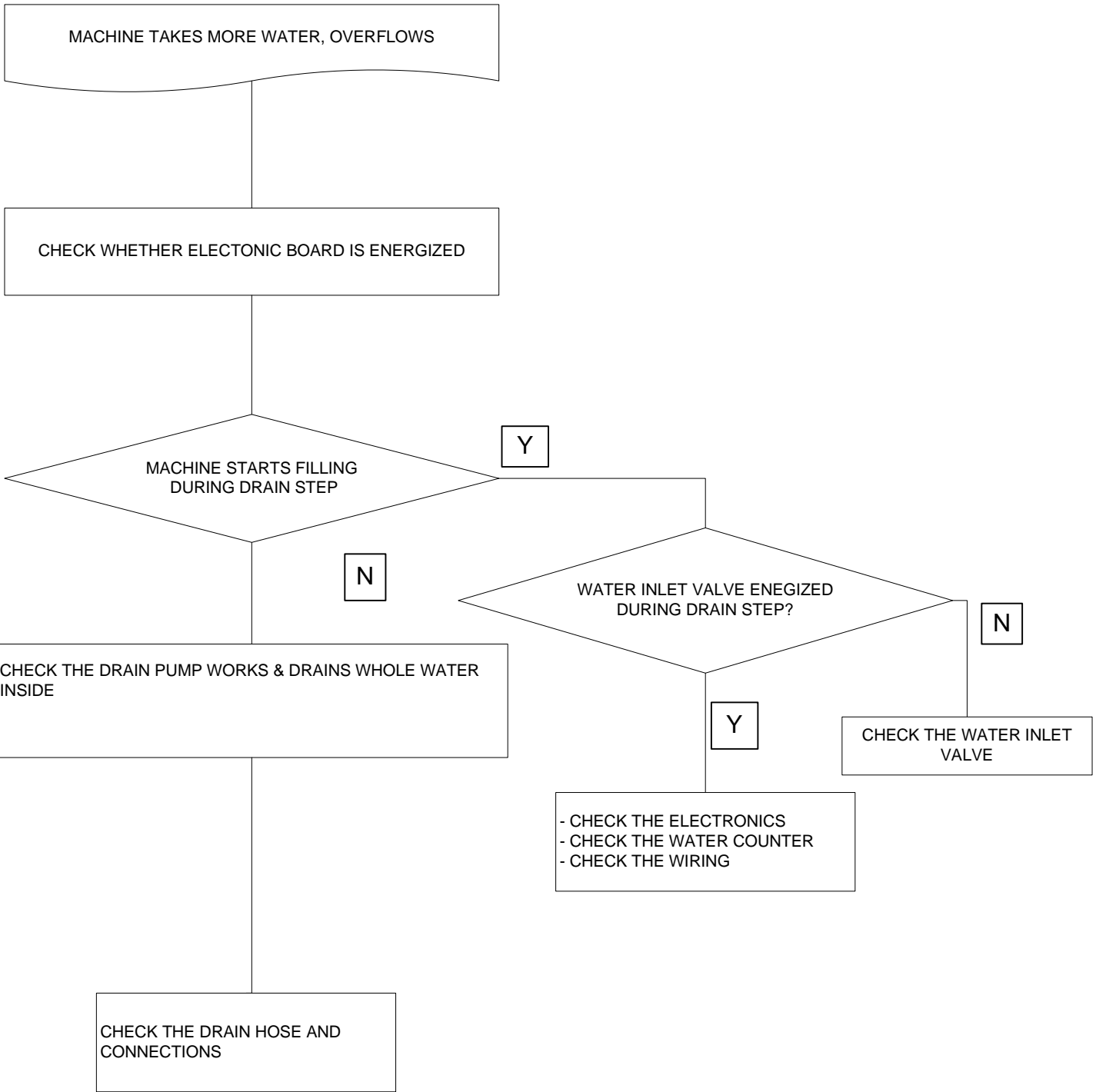
Y

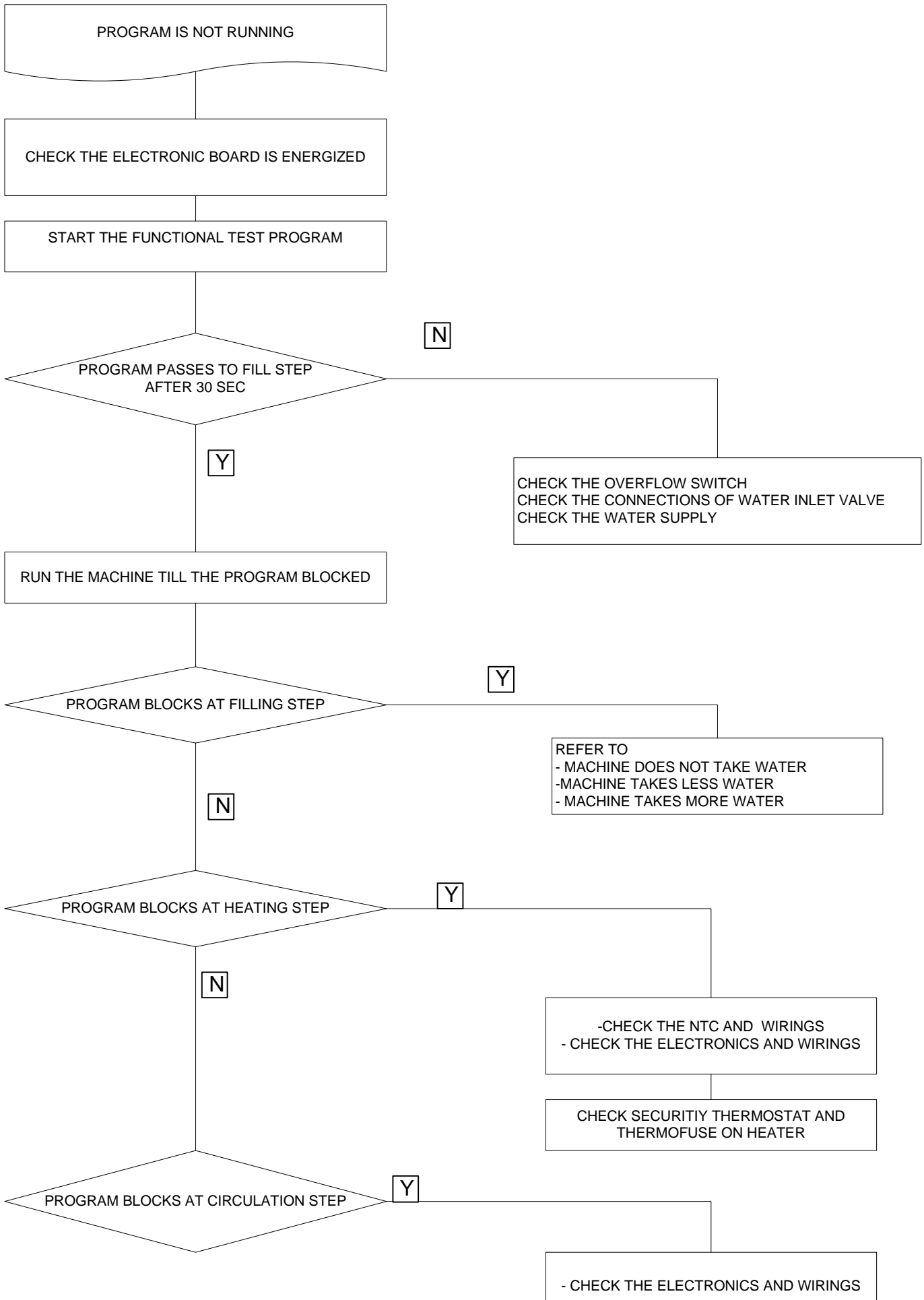
CHECK THE WATER INLET VALVE

- CHECK THE SIPHON AREA ON THE REGENERATION CHAMBER
- RESET THE PNEUMATIC SECURITY (DISASSEMBLE AND REASSEMBLE THE WATER INLET HOSE, TAKE OUT THE WATER AT THE SIPHON AREA)

IF THE MACHINE DOES NOT TAKE WATER EVEN WITH THE PNEUMATIC RESET, CHECK THE WATER INLET VALVE







PROGRAM IS NOT RUNNING

CHECK THE ELECTRONIC BOARD IS ENERGIZED

START THE FUNCTIONAL TEST PROGRAM

PROGRAM PASSES TO FILL STEP
AFTER 30 SEC

N

CHECK THE OVERFLOW SWITCH
CHECK THE CONNECTIONS OF WATER INLET VALVE
CHECK THE WATER SUPPLY

Y

RUN THE MACHINE TILL THE PROGRAM BLOCKED

PROGRAM BLOCKS AT FILLING STEP

Y

REFER TO
- MACHINE DOES NOT TAKE WATER
- MACHINE TAKES LESS WATER
- MACHINE TAKES MORE WATER

N

PROGRAM BLOCKS AT HEATING STEP

Y

-CHECK THE NTC AND WIRINGS
- CHECK THE ELECTRONICS AND WIRINGS

CHECK SECURITY THERMOSTAT AND
THERMOFUSE ON HEATER

N

PROGRAM BLOCKS AT CIRCULATION STEP

Y

- CHECK THE ELECTRONICS AND WIRINGS

